



# 1-Post-Lift | fixed Item No.: TW125F

**kg 2500 kg** **↑ 1,93 m** **⚡ 230 V** **🔧 Semi-auto.**



For use in tight spaces



**Description**  
Fixed one-post lift.  
For use in tight spaces. Ideal for body work, paint shops and of course every day workshop use.

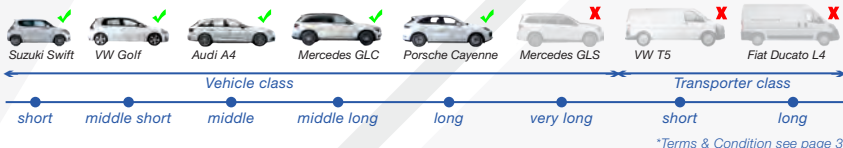
- Features**
- 1A Quality built with CE-Certificate
  - Manufactured in accordance to ISO 9001
  - Hydraulic cylinder for powerful lifting
  - Adjustable lifting pads
  - Telescopic lifting arms
  - Mechanical safety-locks
  - Manual safety lock release
  - Special rolled section columns
  - Aluminum-motor with 24 V –Control box
  - Column chain guard
  - Fixed construction
  - For use in tight spaces
  - Easy to use control unit (Safety rate to IP 54)

- Delivery contents**
- Lift incl. Power unit
  - Heavy duty anchor bolts (10 pcs.)
  - English instruction manual
  - Examination book
  - CE-Certificate
  - **Assembly video online**
  - **Product video online**

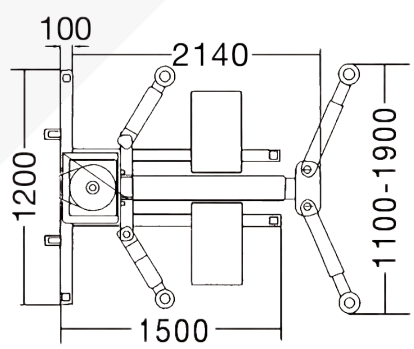
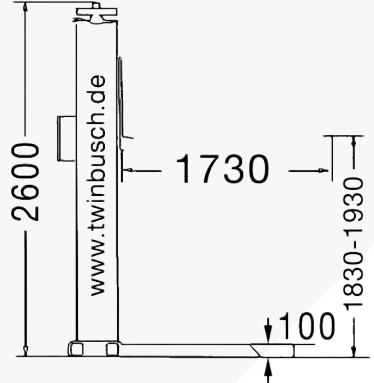
**Videos**



**Vehicle type / Wheelbase**



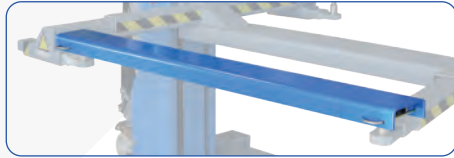
**Dimensions**



**Technical Data**

Lifting capacity	2500 kg
Lifting height max.	1830 - 1930 mm
Lowest lifting point	115 mm
Lifting, lowering time (approx.)	35/30 sec.
Power supply	230 V
Motor power	2,2 kW
Fusing	16 A / type C
Weight (approx.)	720 kg

**Optional accessory**



Cross beams for the 1-Post-Lift  
Item No.: TW125-Q  
(2 pcs. in the set)  
Set of cross beams for lifting vehicles with narrow frames such as off-roadvehicles or pre-war vintage cars.

Further accessories can be found at [www.twinbusch.co.uk](http://www.twinbusch.co.uk)