

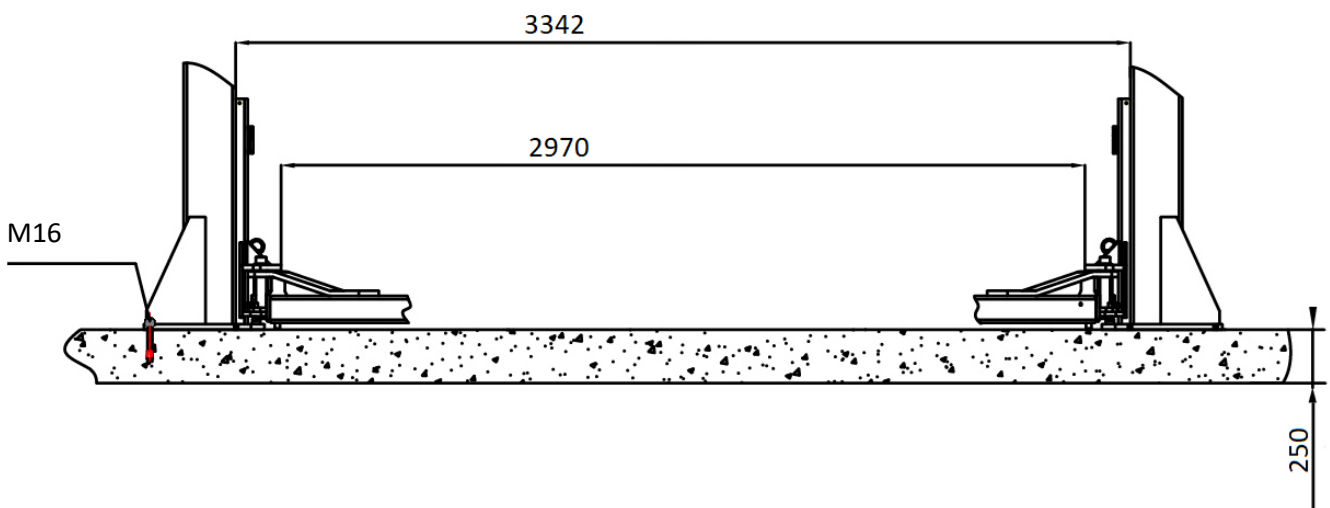
Requirements for the concrete floor:

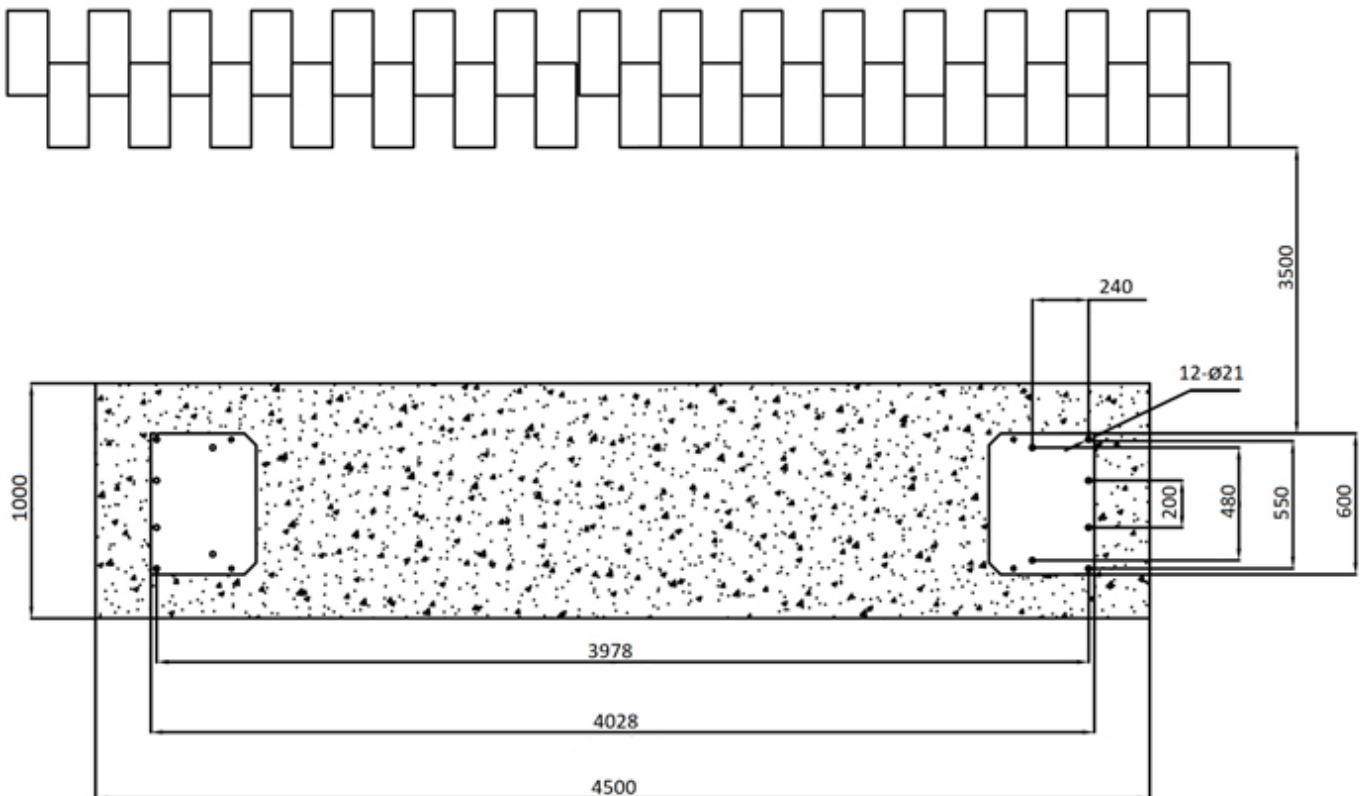
- Concrete C20/25 according to DIN 1045-2 (previous designation: DIN 1045 concrete B25).
- The floor must be level and have a flatness of less than $\leq 5\text{mm/m}$.
- Newly poured concrete must cure for at least 28 days.

Foundation dimensions:

- Ideally, the entire hall floor should be made of concrete C20/25 with a thickness of at least 250 mm.

Anchoring bolt	Foundation thickness	Drilling depth	Anchoring depth
M16	$\geq 250\text{ mm}$	160 mm	145 mm





Base plate reinforcement for TW250W-G:

Please note that the reinforcement plates are not needed in most cases. Without reinforcement plates, a minimum concrete thickness of 250 mm is required! (for the 2-post post lift model mentioned here with a load capacity of 5.0 t)

Suitable for the **TW250W-G**

Experience has shown that the required concrete strength (foundation requirement of 250 mm) is available; this is to be checked by the customer. If, in exceptional cases, the foundation requirement is not met, we offer you this special solution.

The minimum requirements for concrete thickness are reduced by 50 mm when the reinforcement plates are installed. This base plate reinforcement is therefore to be used for concrete thicknesses between 200-250 mm.



Other requirements:

- The surrounding ground must be suitable for the load, e.g. no sandy soil, etc.
- Reinforcement in the concrete is not mandatory for the proper use of the lifting platform, but is recommended.
- The lifting platform must NOT be installed on ceilings or floors with basements without authorisation. In case of doubt, the foundation should always be designed by a structural engineer; this is mandatory for ceilings or floors with basements.
- If tiles, screed, insulation and underfloor heating are used, please consult our technical department.

For soil exposed to frost, note the following:

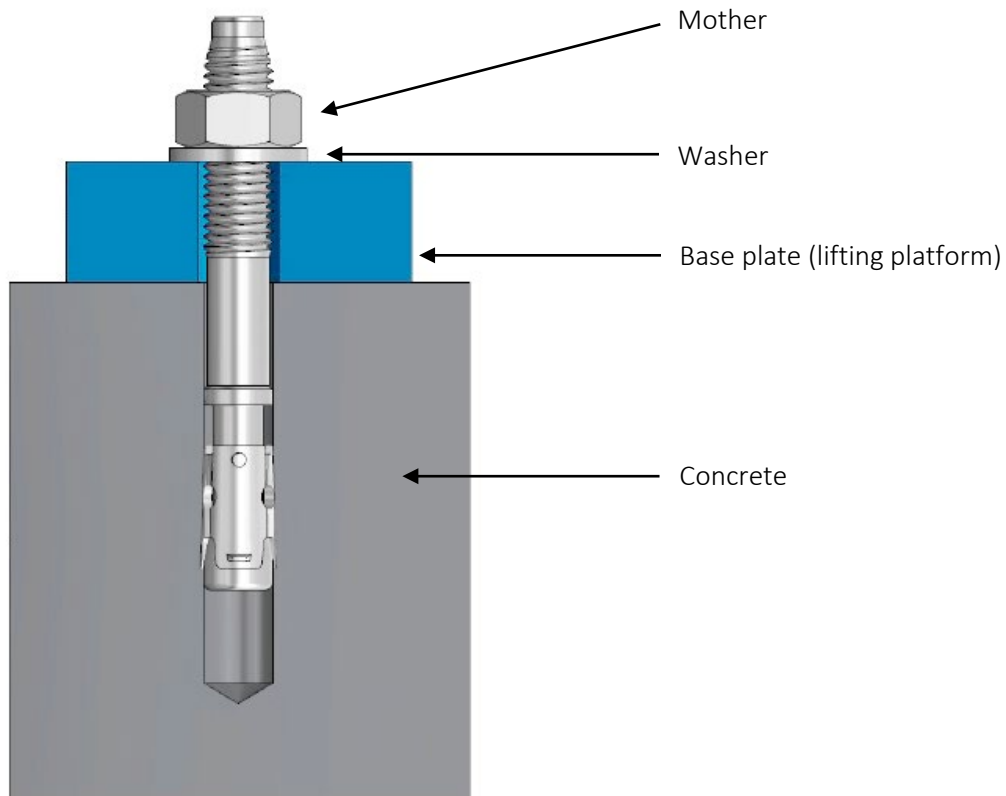
For frost exposure, the concrete must comply with exposure class XF4, as dripping de-icing agent cannot be ruled out.

This results in the following minimum requirements for the concrete when exposed to frost:

Exposure class:	XF4
Maximum w/c:	0,45
Minimum compressive strength:	C30/37 (instead of C20/25)
Minimum cement content:	340 kg/m ³
Minimum air void content:	4.0 %
Total foundation depth:	≥ 80 cm (due to frost resistance)
Remainder filled with gravel:	0/32

It must be noted, however, that the lifts are not designed for outdoor use (except for galvanised models). The control box is IP54, but the rest of the electrics, motors and limit switches are IP44 at most.

Anchor bolt fastening



The tightening torque of the anchor bolts (M16) is: 100-110 Nm.